

2019

# CHECKMATE TACTICAL LLC.

AR-15/AR-10/M4 HANDGUARD MANUFACTURING





*OEM MANUFACTURING  
LONG TERM PO'S TO LOCK IN PRICING  
LASER ENGRAVING  
CUSTOM DESIGN WORK*



*PLEASE CONTACT US AT 720-989-7350  
OR CHRIS@CHECKMATE-TACTICAL.COM  
WITH YOUR NEEDS AND WE WILL BE  
HAPPY TO WORK UP A QUOTE FOR YOU.*

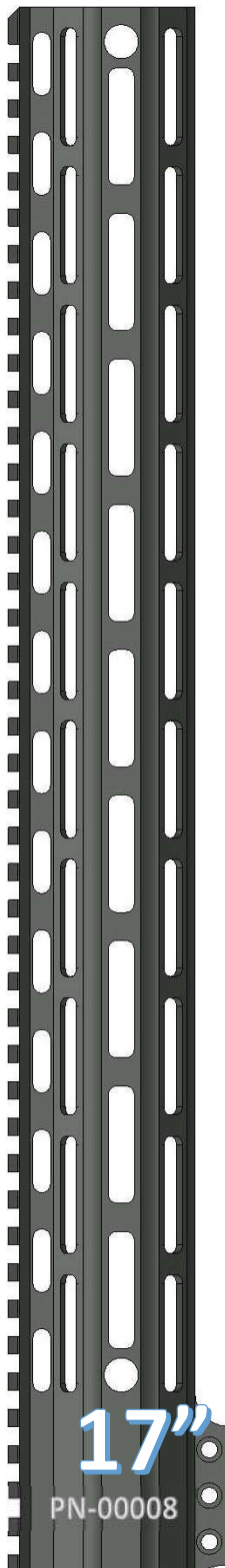
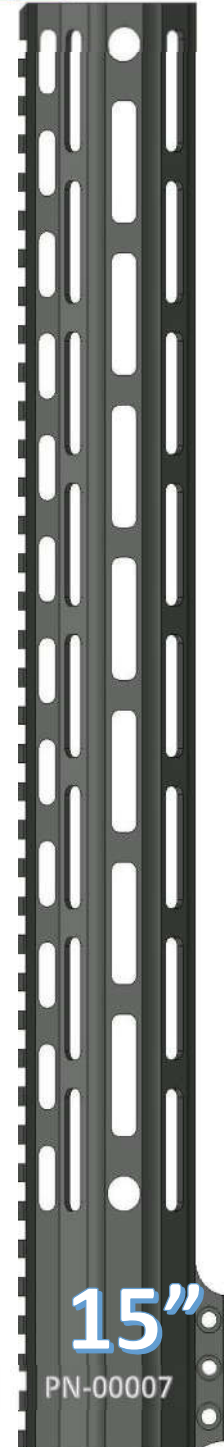
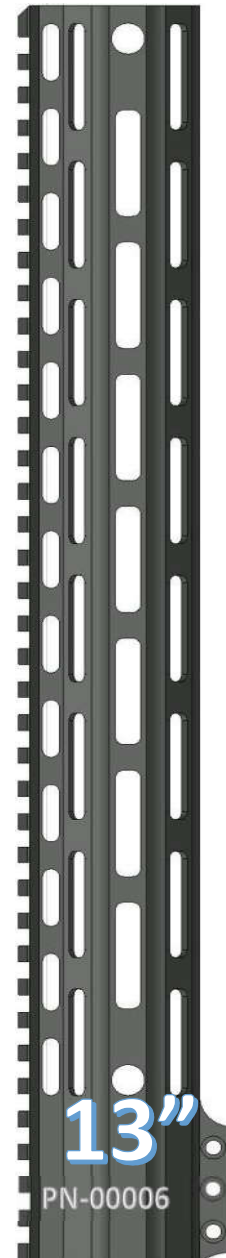
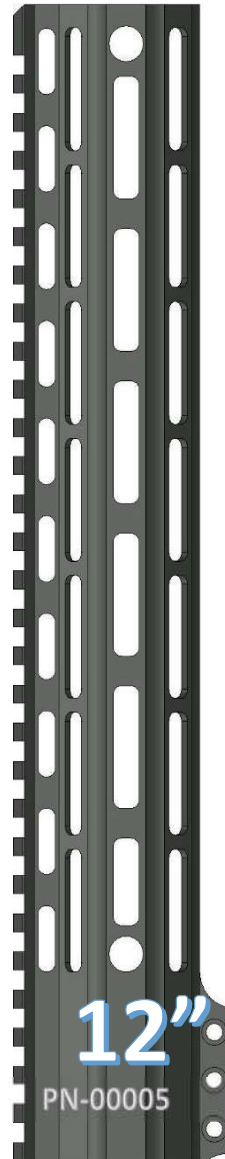
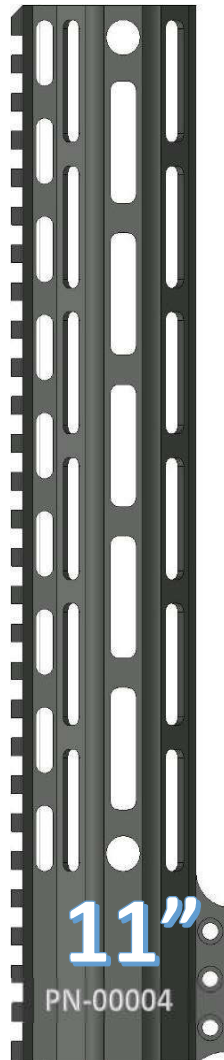
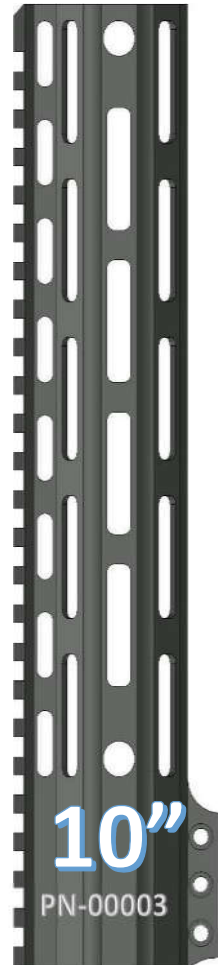
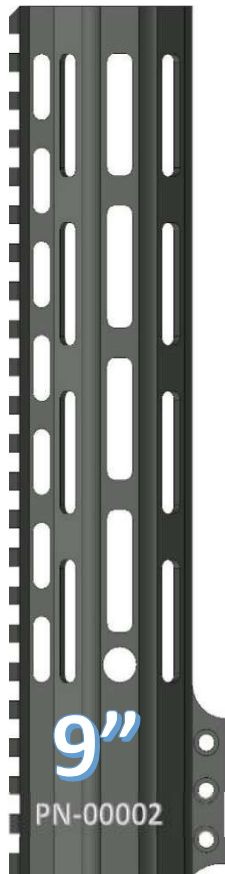
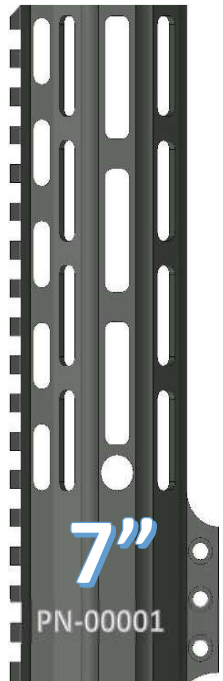


# ~THE PAWN HANDGUARD~ MLOK OVAL PATTERN

## FEATURES

- MAG-PUL SPEC MLOK SLOTS
- QD ATTACHMENT POINTS
- STEEL BARREL NUT
- 6061 T6 ALLOY
- 100% MADE IN USA

[www.checkmate-tactical.com](http://www.checkmate-tactical.com) 720-989-7350



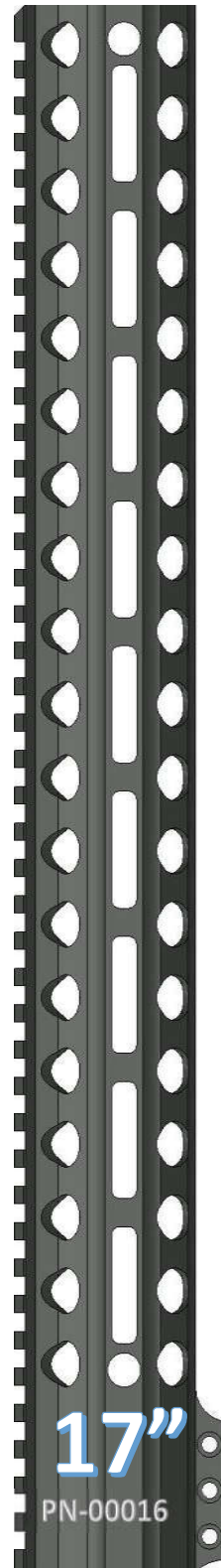
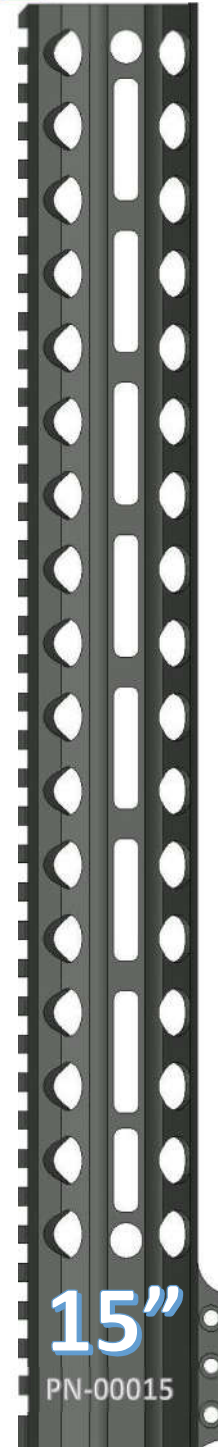
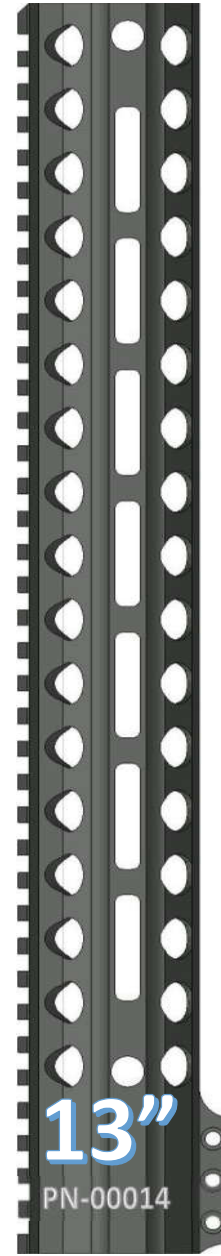
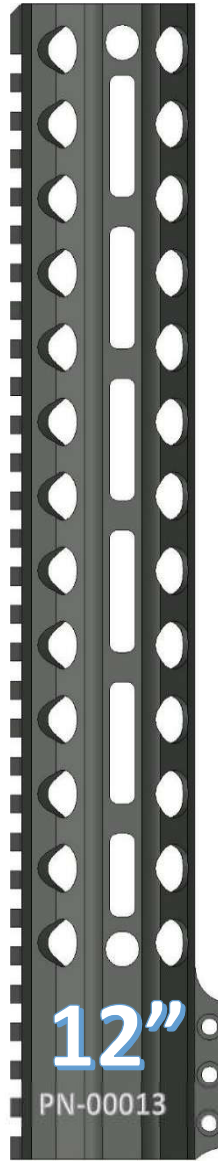
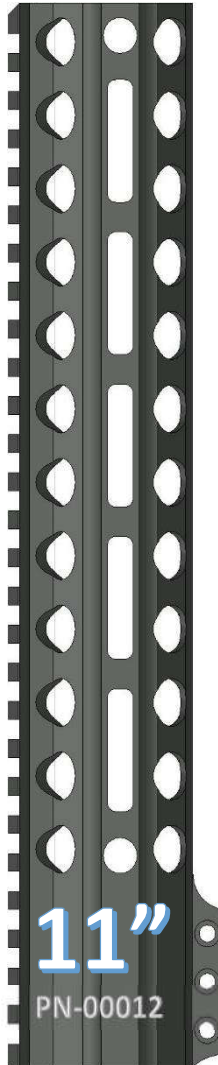
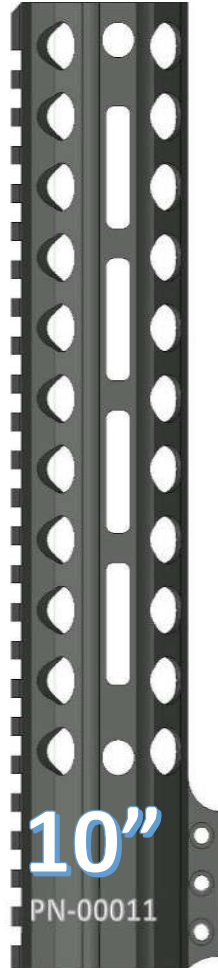
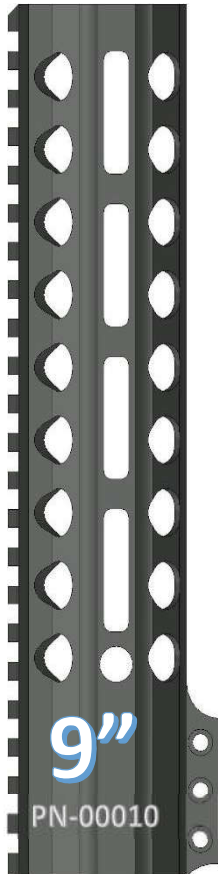
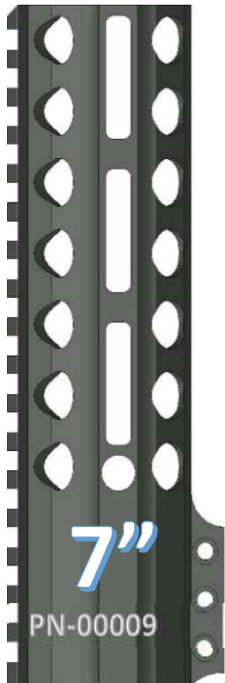


# ~THE PAWN HANDGUARD~ MLOK RING PATTERN

## FEATURES

MAG-PUL SPEC MLOK SLOTS  
QD ATTACHMENT POINTS  
STEEL BARREL NUT  
6061 T6 ALLOY  
100% MADE IN USA

[www.checkmate-tactical.com](http://www.checkmate-tactical.com) 720-989-7350





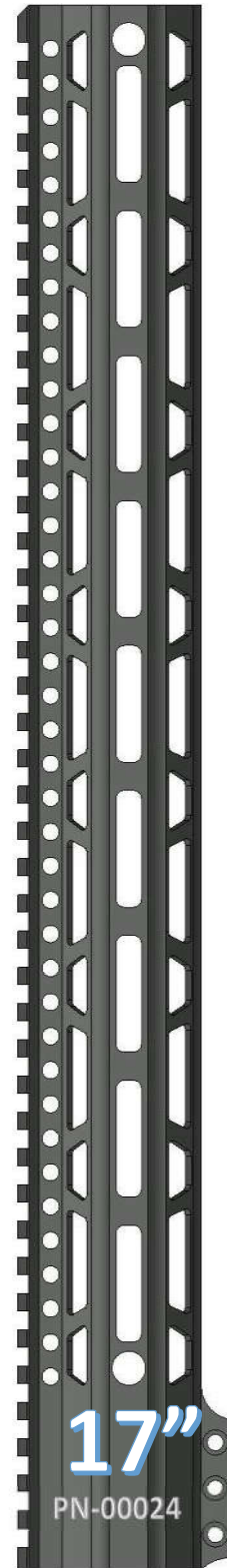
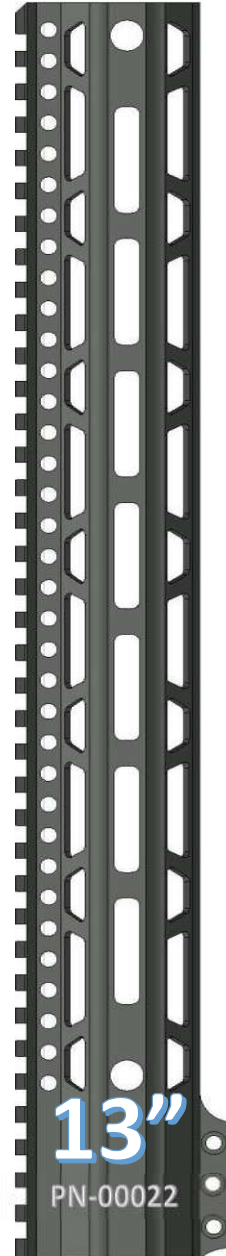
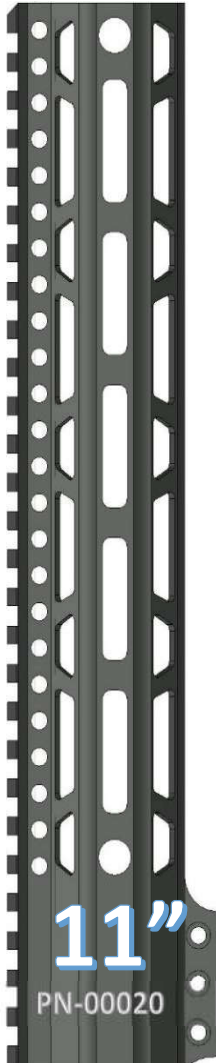
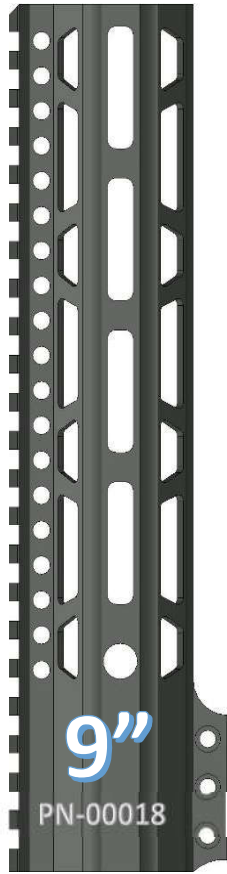
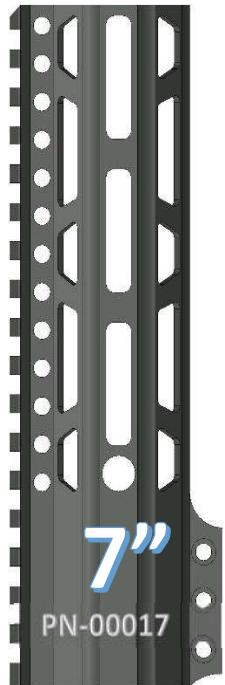
# ~THE PAWN HANDGUARD~

## MLOK TRAPEZOID PATTERN

### FEATURES

- MAG-PUL SPEC MLOK SLOTS
- QD ATTACHMENT POINTS
- STEEL BARREL NUT
- 6061 T6 ALLOY
- 100% MADE IN USA

[www.checkmate-tactical.com](http://www.checkmate-tactical.com) 720-989-7350



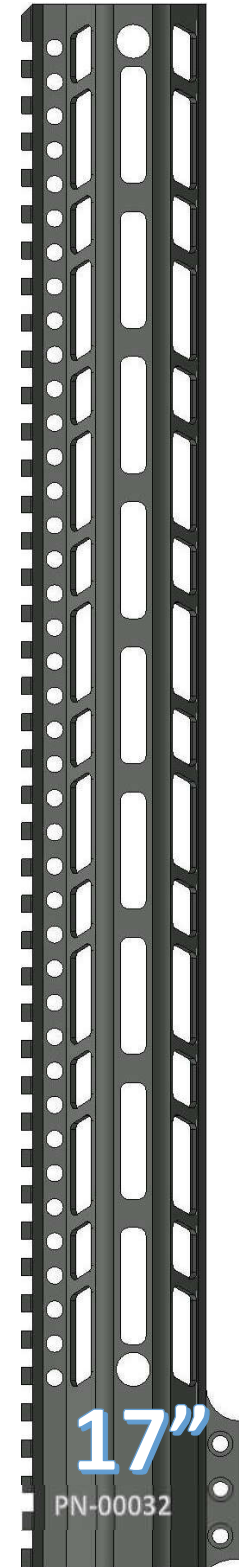
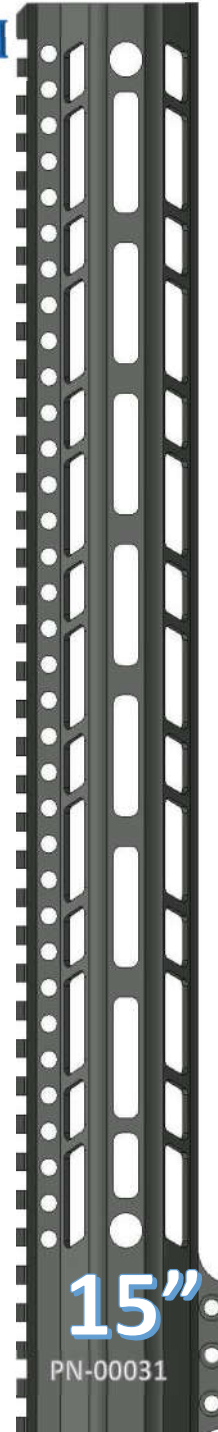
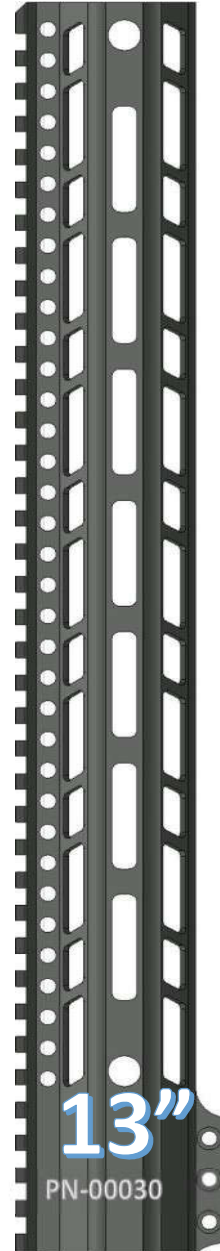
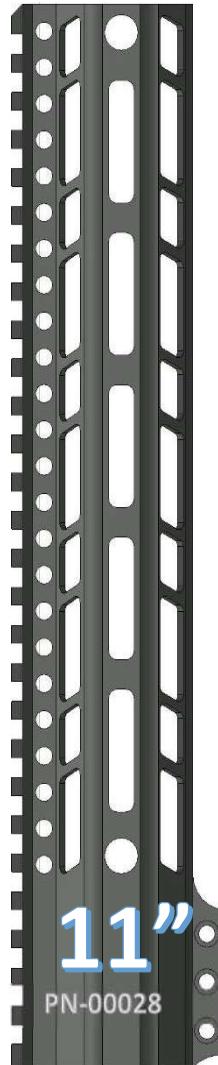
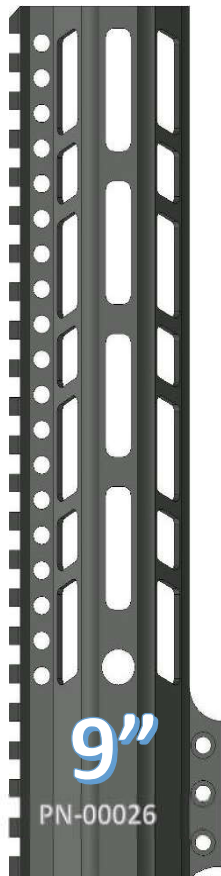


# ~THE PAWN HANDGUARD~ MLOK PARALLELOGRAM PATTERN

## FEATURES

- MAG-PUL SPEC MLOK SLOTS
- QD ATTACHMENT POINTS
- STEEL BARREL NUT
- 6061 T6 ALLOY
- 100% MADE IN USA

[www.checkmate-tactical.com](http://www.checkmate-tactical.com) 720-989-7350



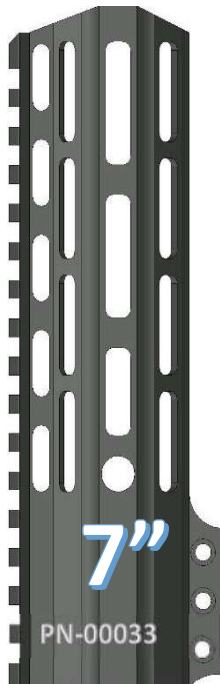


# ~THE ROOK HANDGUARD~ MLOK OVAL PATTERN

## FEATURES

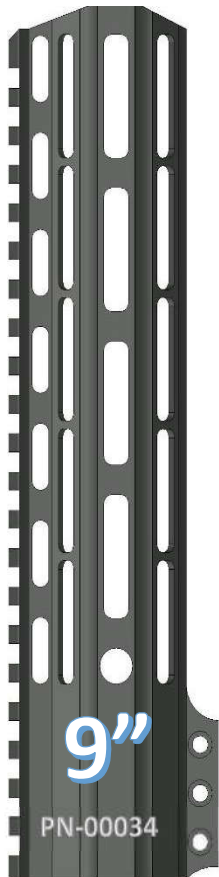
MAG-PUL SPEC MLOK SLOTS  
QD ATTACHMENT POINTS  
STEEL BARREL NUT  
6061 T6 ALLOY  
100% MADE IN USA

[www.checkmate-tactical.com](http://www.checkmate-tactical.com) 720-989-7350



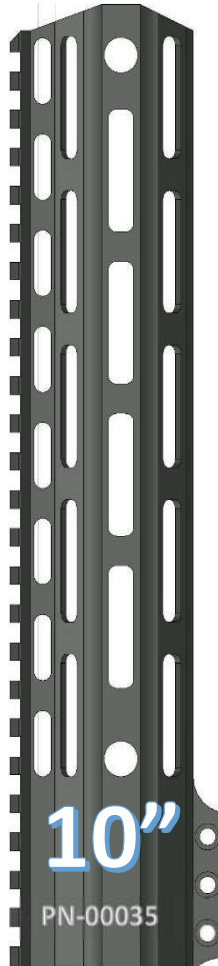
7"

PN-00033



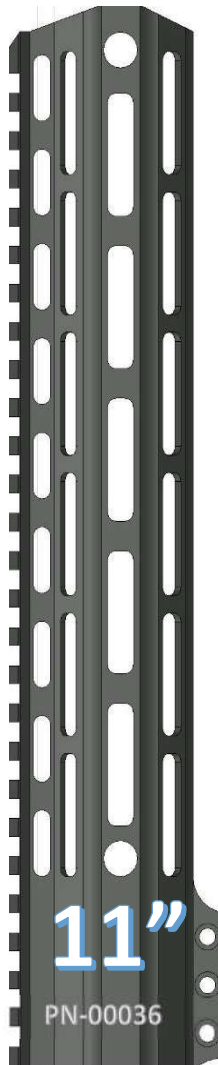
9"

PN-00034



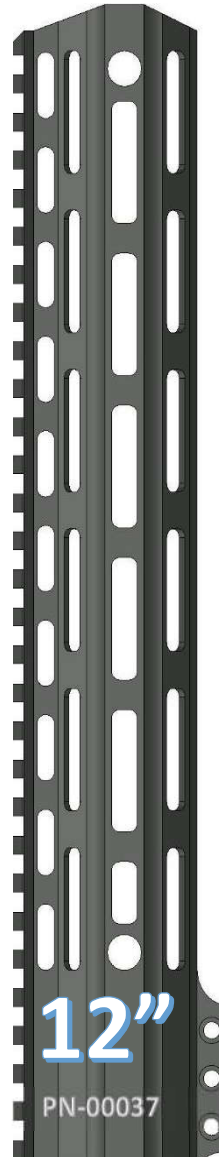
10"

PN-00035



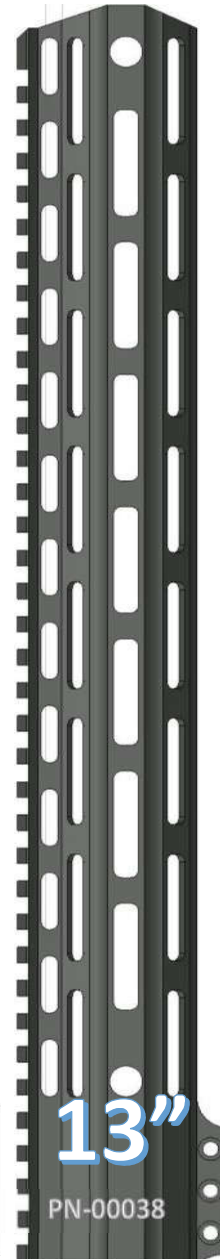
11"

PN-00036



12"

PN-00037



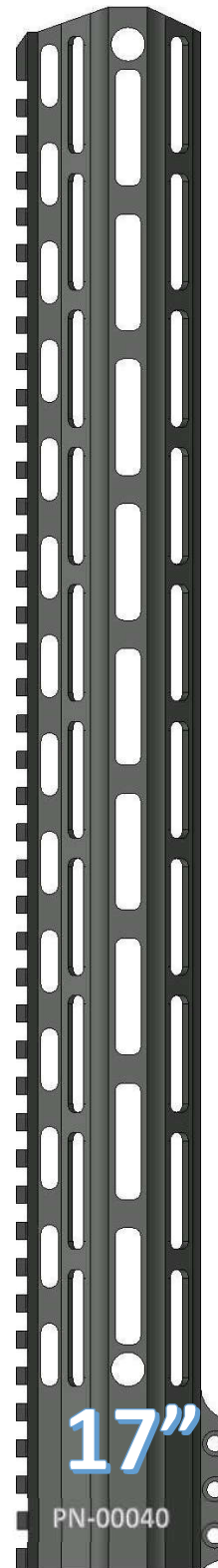
13"

PN-00038



15"

PN-00039



17"

PN-00040



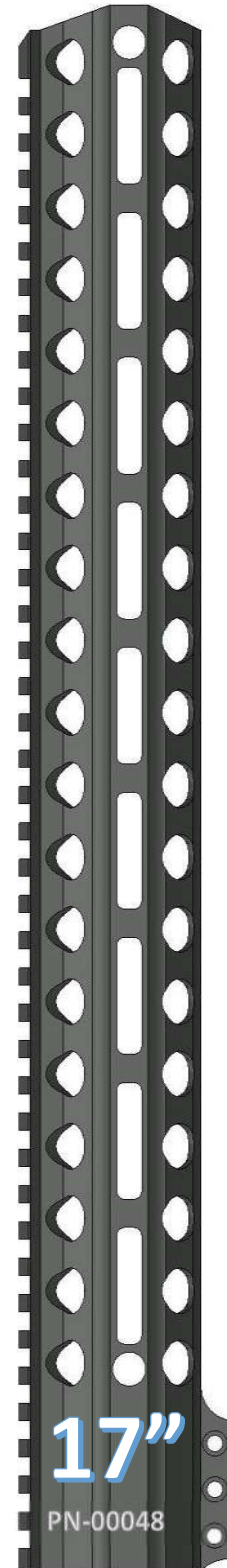
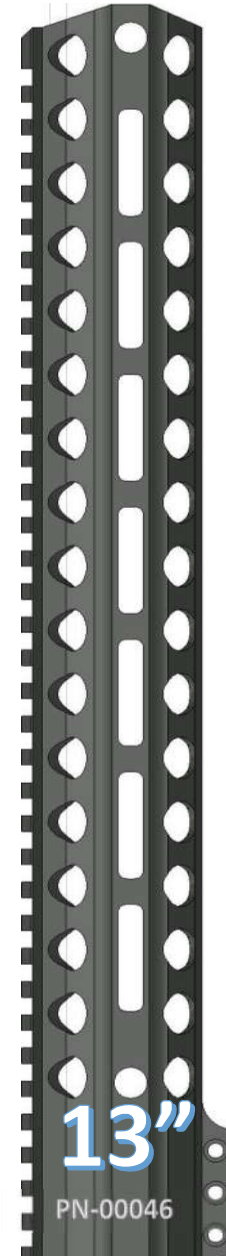
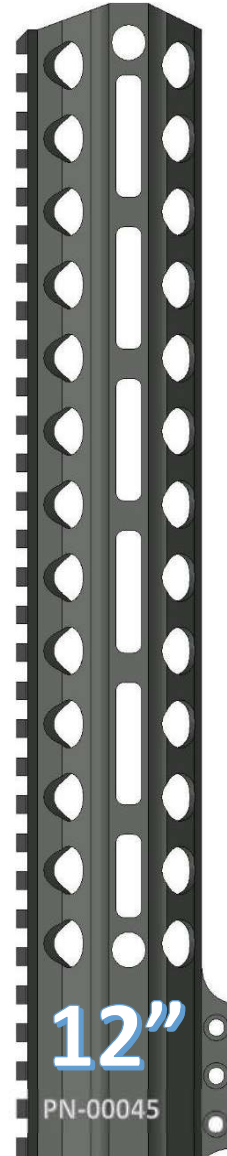
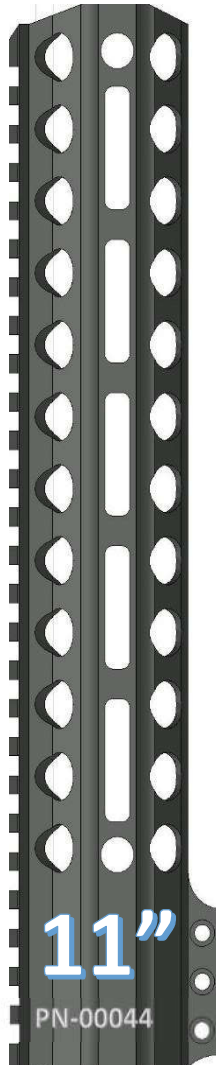
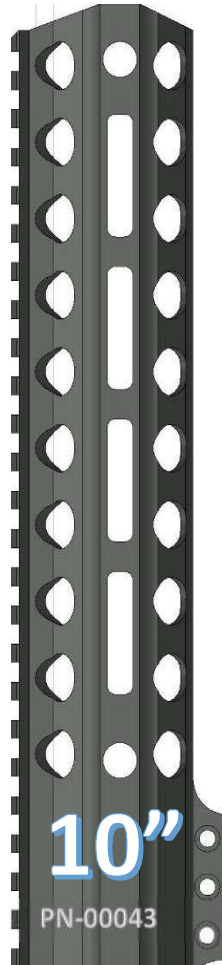
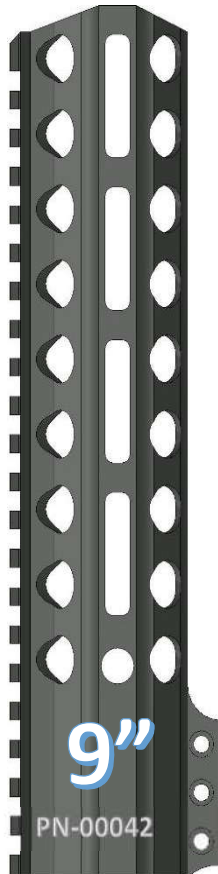
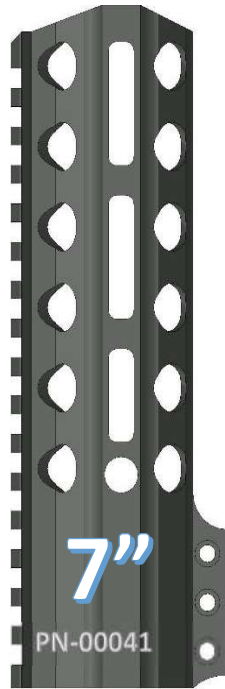


# ~THE ROOK HANDGUARD~ MLOK RING PATTERN

## FEATURES

- MAG-PUL SPEC MLOK SLOTS
- QD ATTACHMENT POINTS
- STEEL BARREL NUT
- 6061 T6 ALLOY
- 100% MADE IN USA

[www.checkmate-tactical.com](http://www.checkmate-tactical.com) 720-989-7350





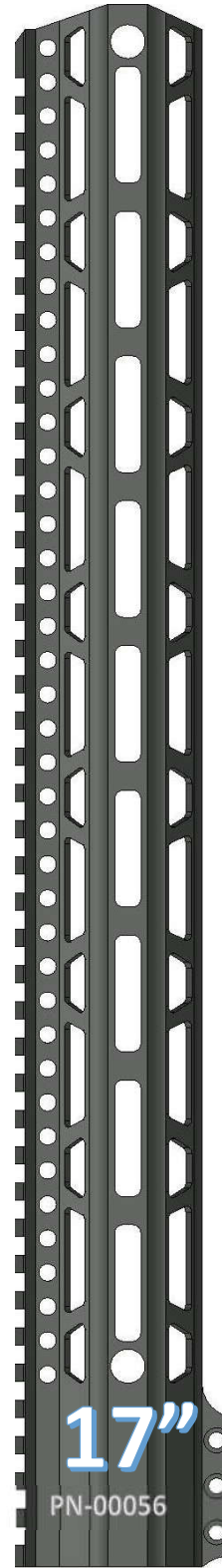
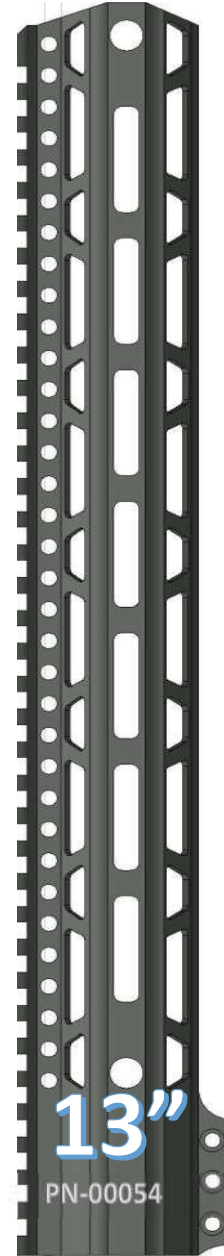
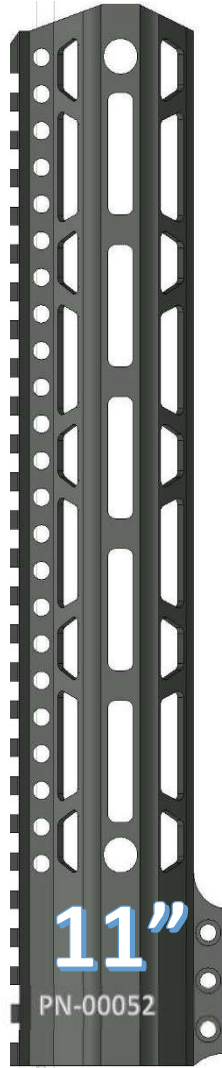
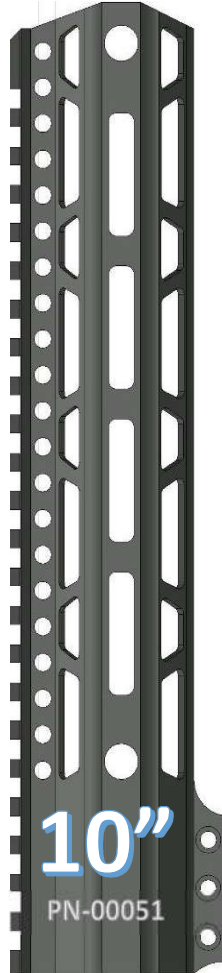
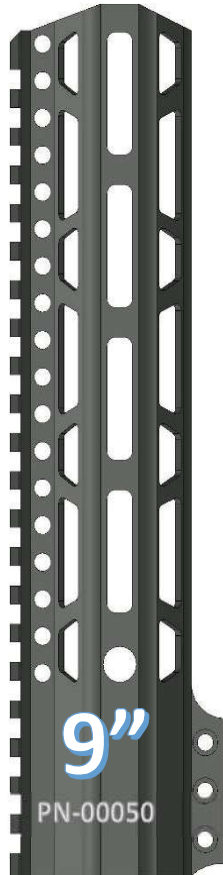
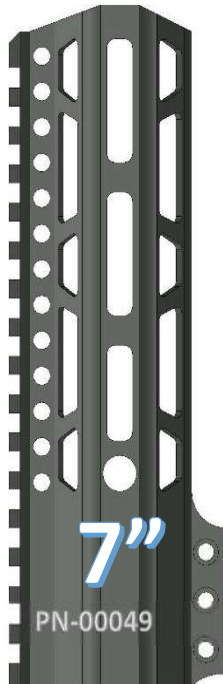
# ~THE ROOK HANDGUARD~

## MLOK TRAPEZOID PATTERN

### FEATURES

- MAG-PUL SPEC MLOK SLOTS
- QD ATTACHMENT POINTS
- STEEL BARREL NUT
- 6061 T6 ALLOY
- 100% MADE IN USA

[www.checkmate-tactical.com](http://www.checkmate-tactical.com) 720-989-7350



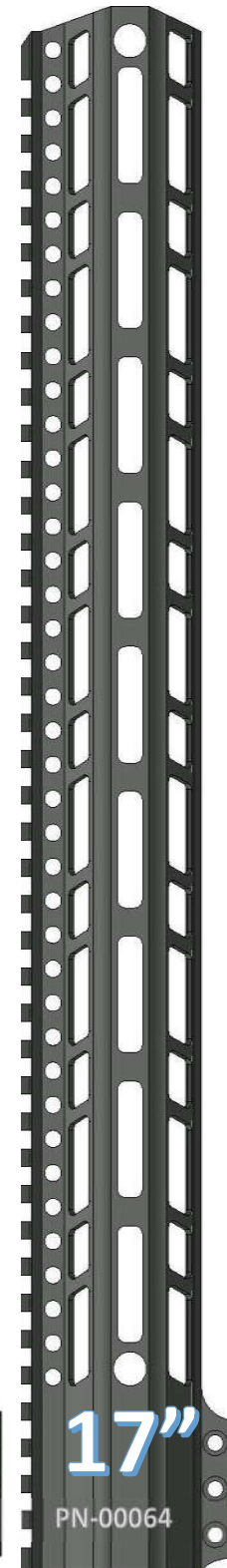
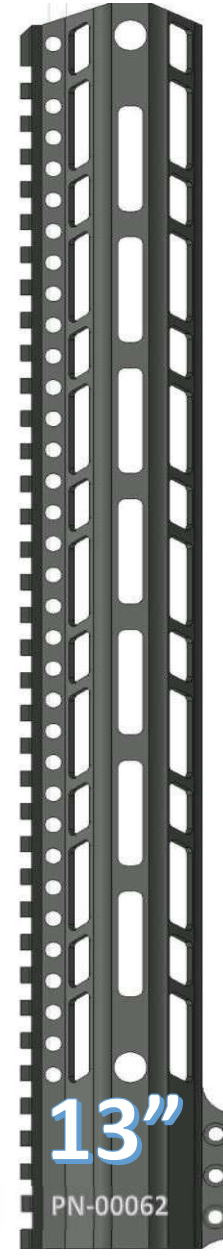
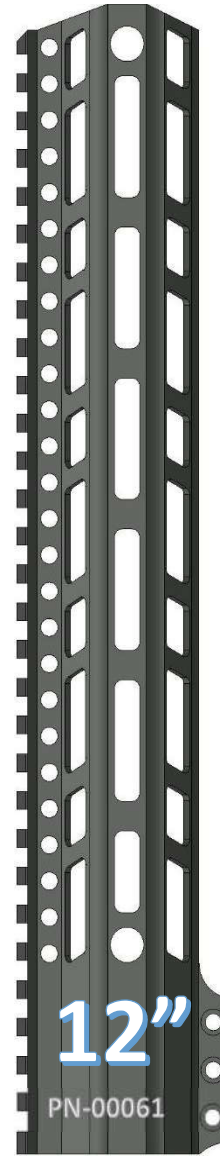
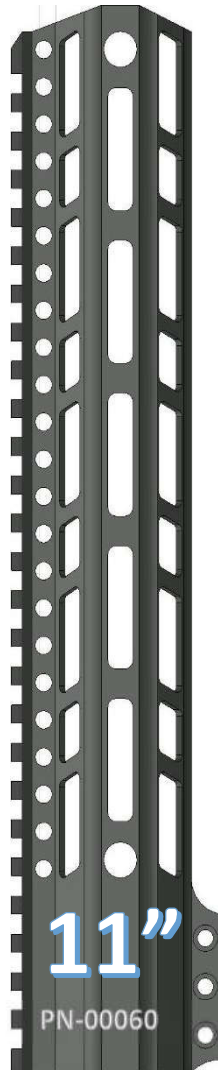
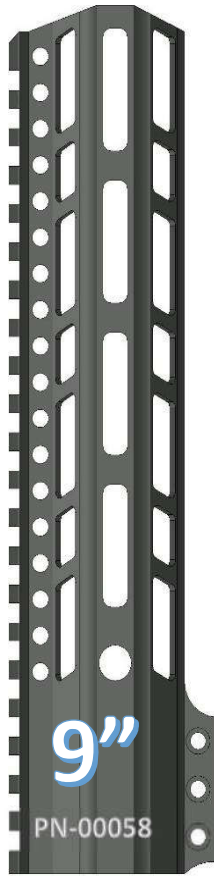
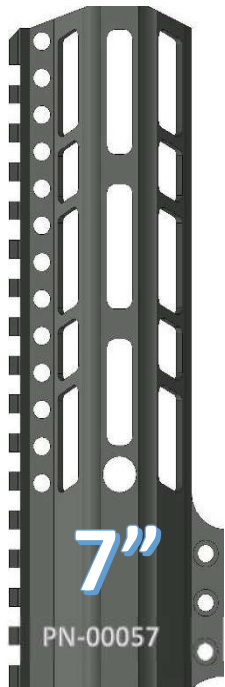


# ~THE ROOK HANDGUARD~ MLOK PARALLELOGRAM PATTERN

## FEATURES

MAG-PUL SPEC MLOK SLOTS  
QD ATTACHMENT POINTS  
STEEL BARREL NUT  
6061 T6 ALLOY  
100% MADE IN USA

[www.checkmate-tactical.com](http://www.checkmate-tactical.com) 720-989-7350



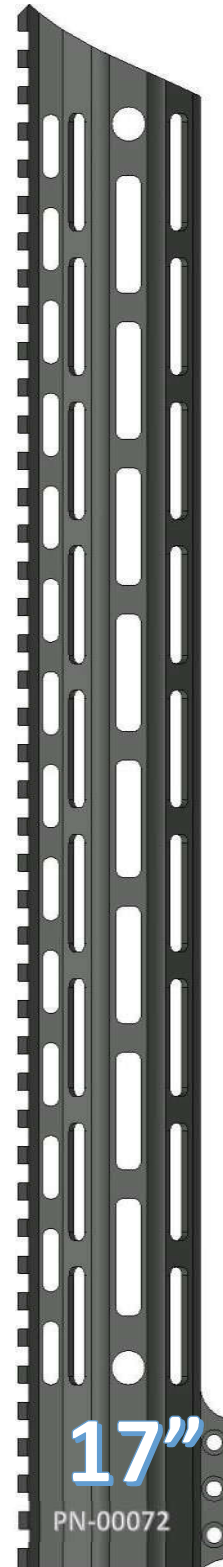
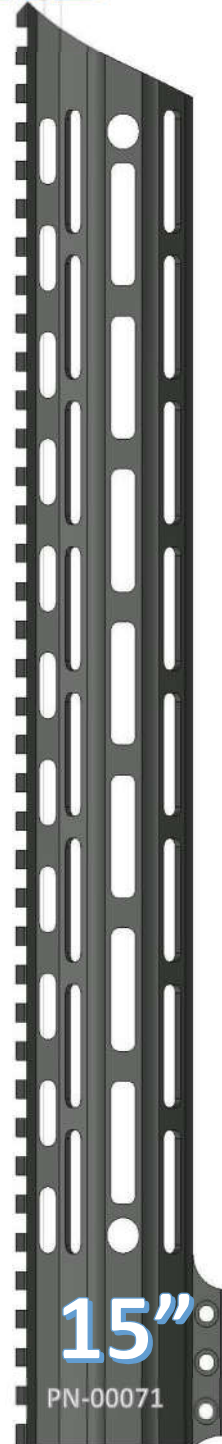
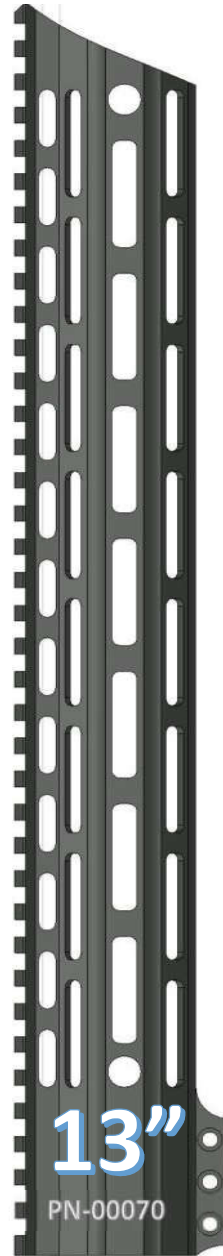
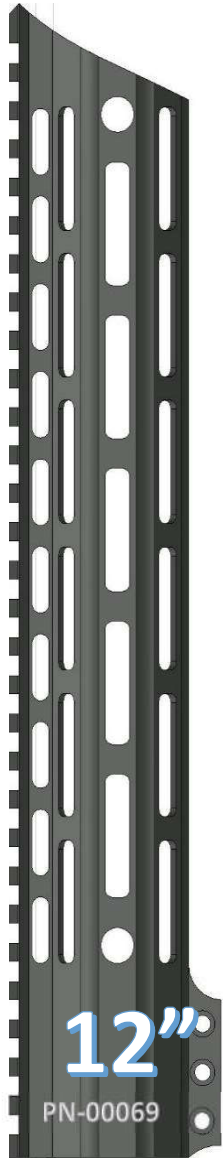
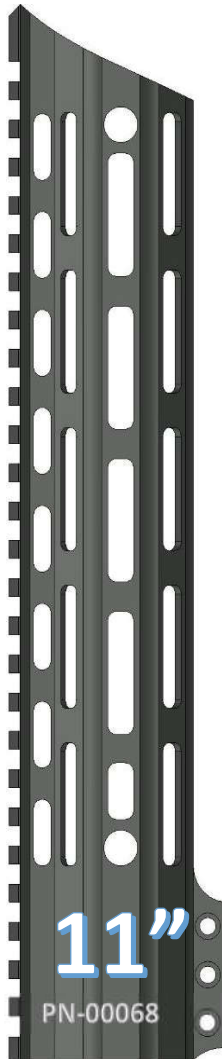
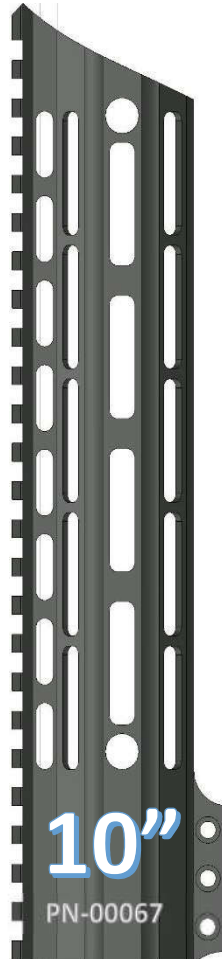
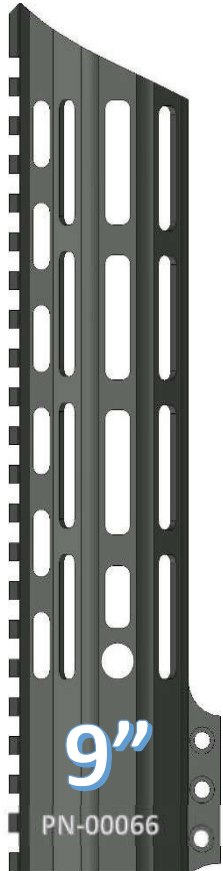
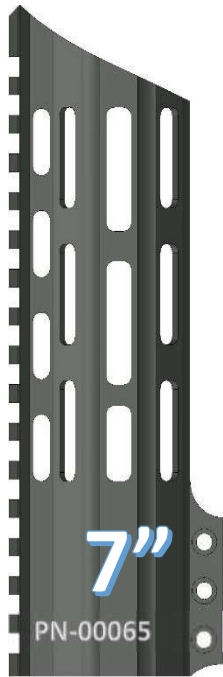


# ~THE KNIGHT HANDGUARD~ MLOK OVAL PATTERN

## FEATURES

MAG-PUL SPEC MLOK SLOTS  
QD ATTACHMENT POINTS  
STEEL BARREL NUT  
6061 T6 ALLOY  
100% MADE IN USA

[www.checkmate-tactical.com](http://www.checkmate-tactical.com) 720-989-7350



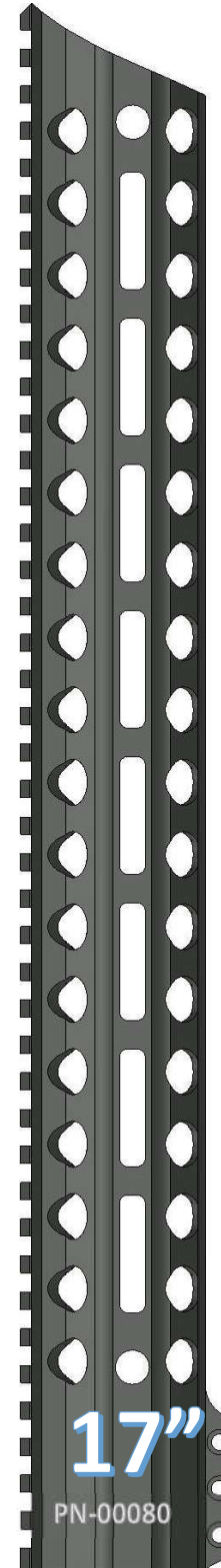
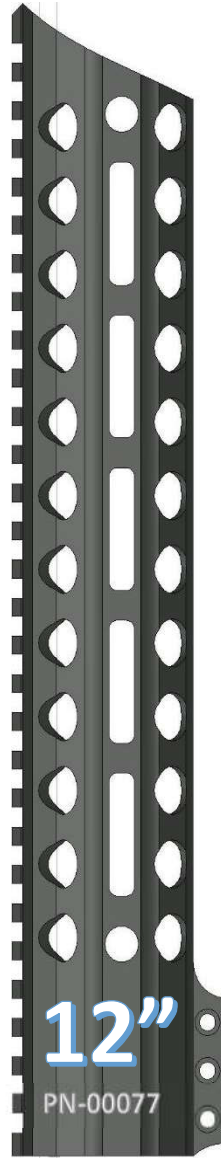
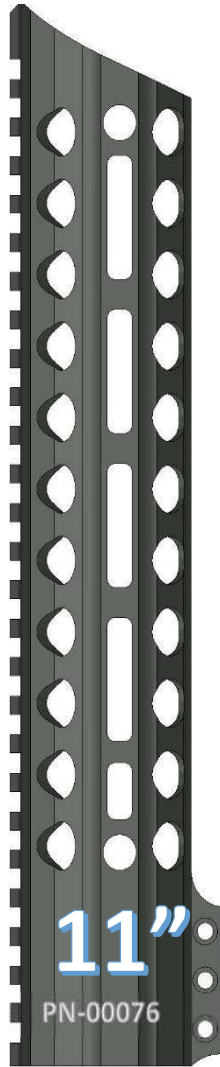
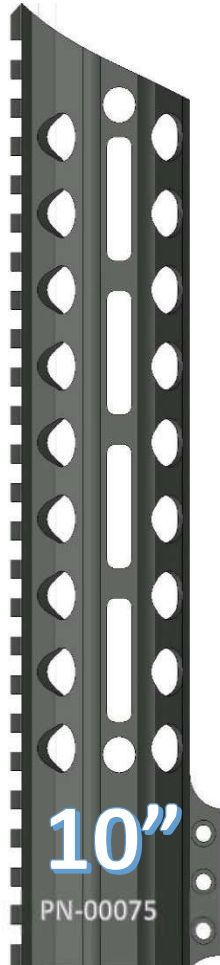
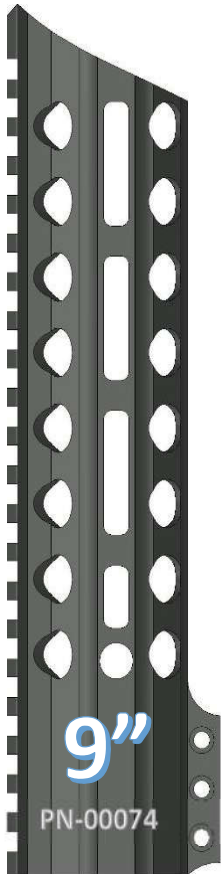
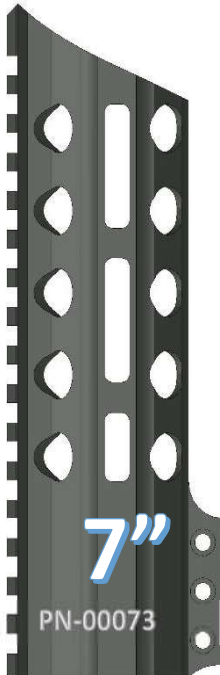


# ~THE KNIGHT HANDGUARD~ MLOK RING PATTERN

## FEATURES

MAG-PUL SPEC MLOK SLOTS  
QD ATTACHMENT POINTS  
STEEL BARREL NUT  
6061 T6 ALLOY  
100% MADE IN USA

[www.checkmate-tactical.com](http://www.checkmate-tactical.com) 720-989-7350



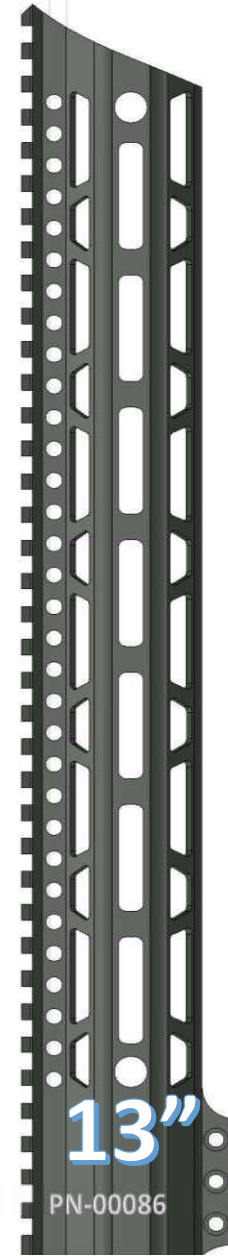
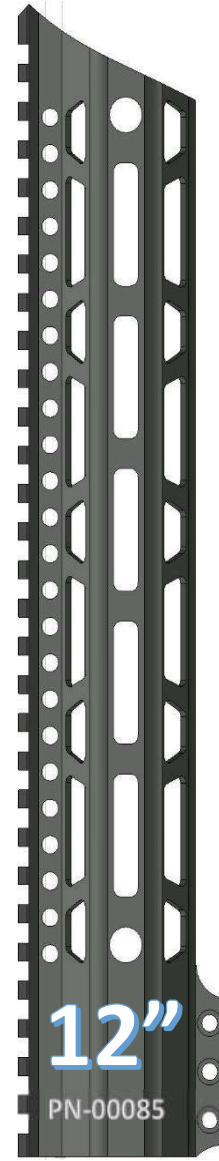
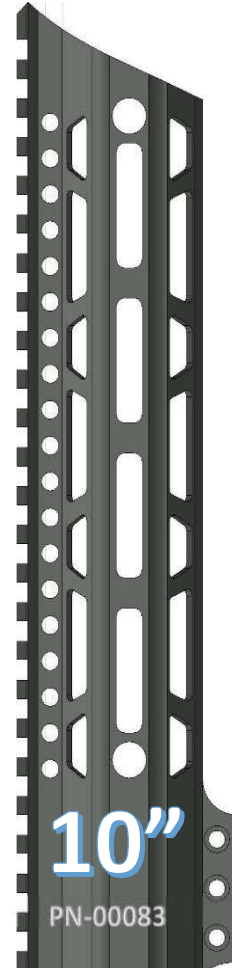
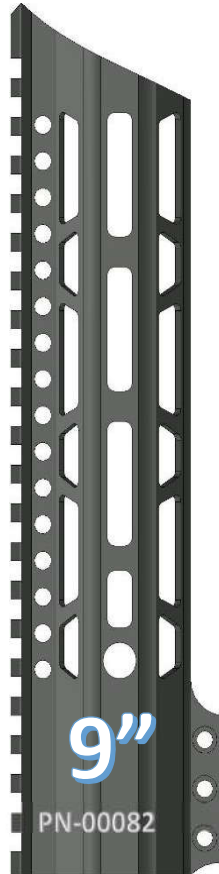
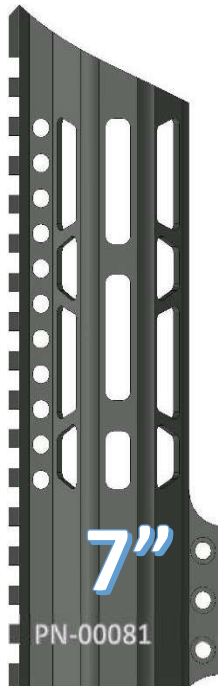


# ~THE KNIGHT HANDGUARD~ MLOK TRAPEZOID PATTERN

## FEATURES

- MAG-PUL SPEC MLOK SLOTS
- QD ATTACHMENT POINTS
- STEEL BARREL NUT
- 6061 T6 ALLOY
- 100% MADE IN USA

[www.checkmate-tactical.com](http://www.checkmate-tactical.com) 720-989-7350



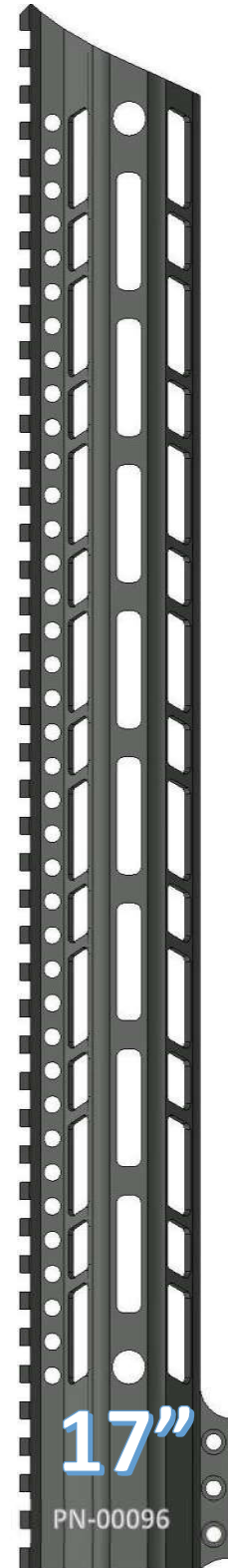
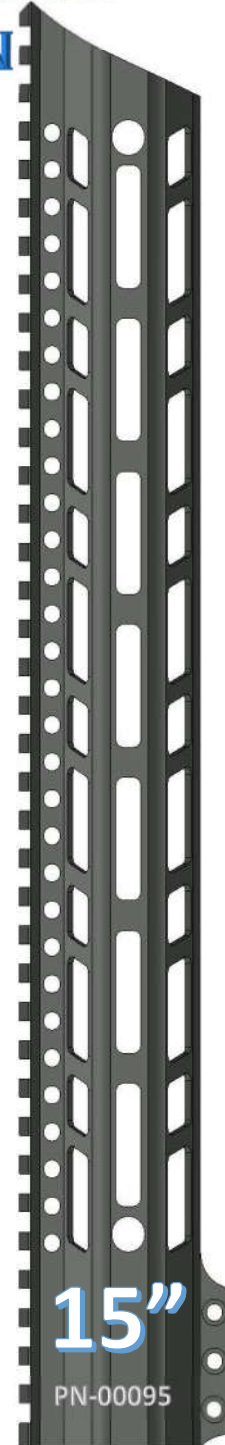
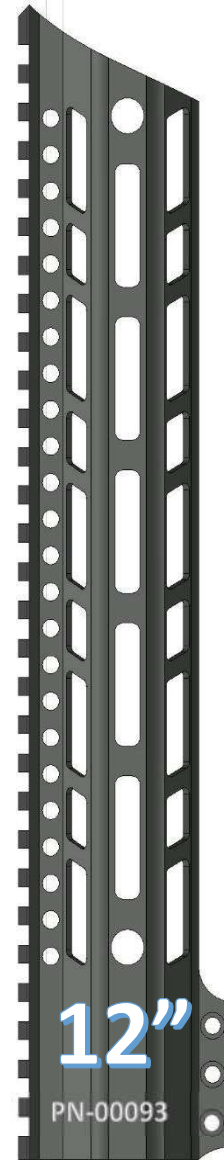
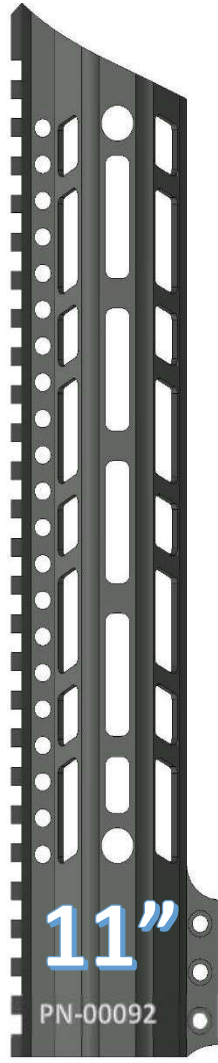
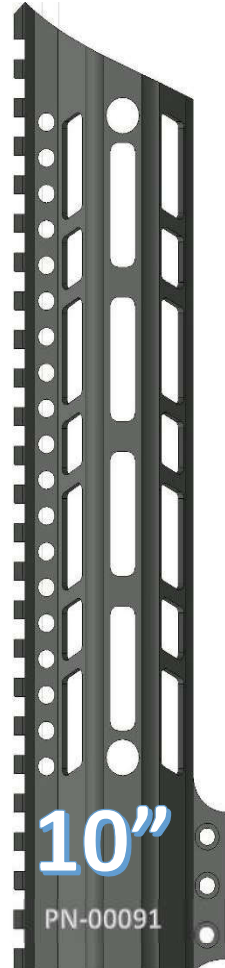
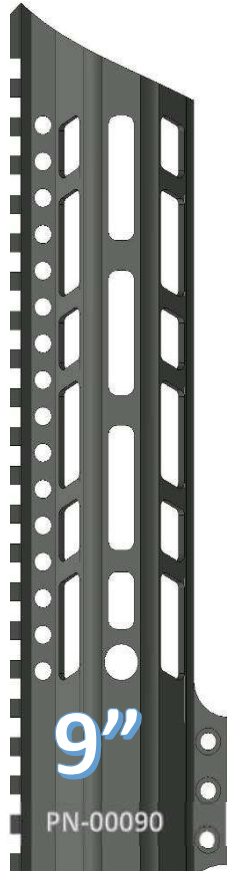
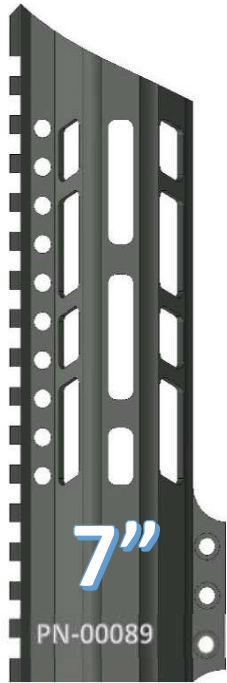


# ~THE KNIGHT HANDGUARD~ MLOK PARALLELOGRAM PATTERN

## FEATURES

- MAG-PUL SPEC MLOK SLOTS
- QD ATTACHMENT POINTS
- STEEL BARREL NUT
- 6061 T6 ALLOY
- 100% MADE IN USA

[www.checkmate-tactical.com](http://www.checkmate-tactical.com) 720-989-7350



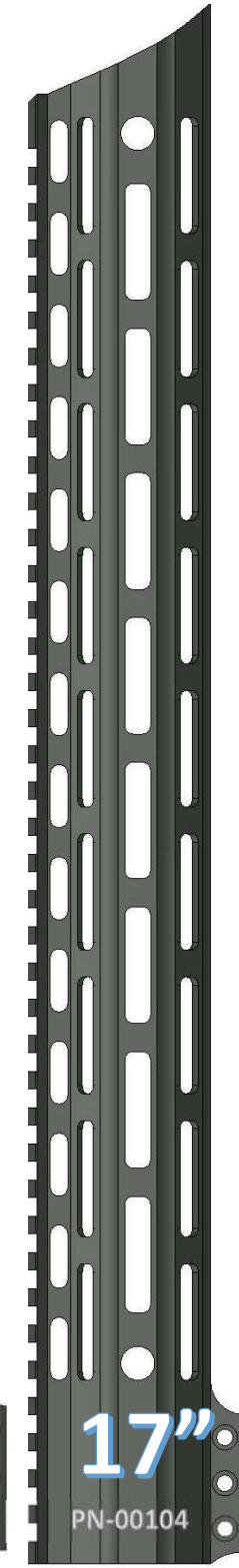
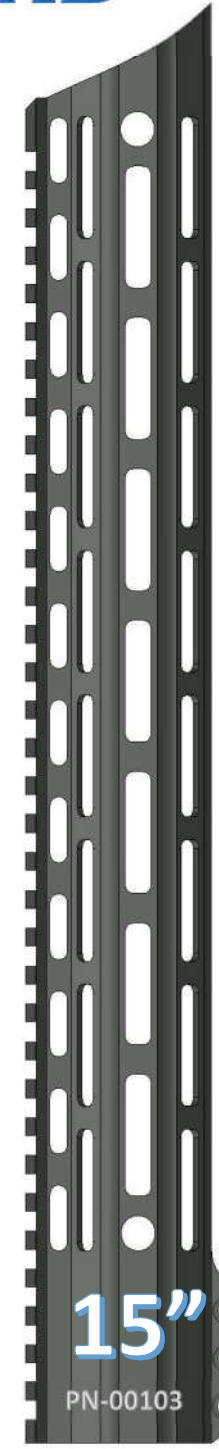
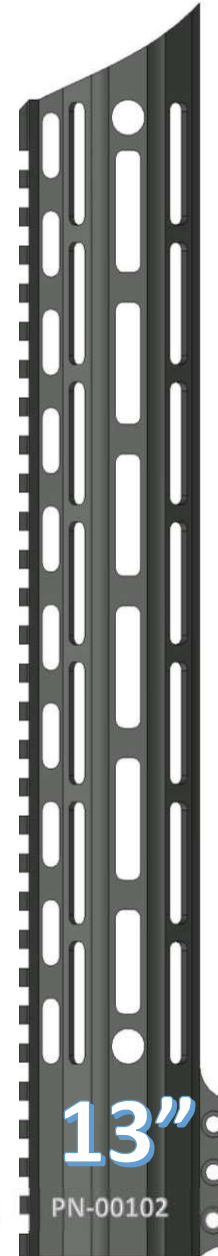
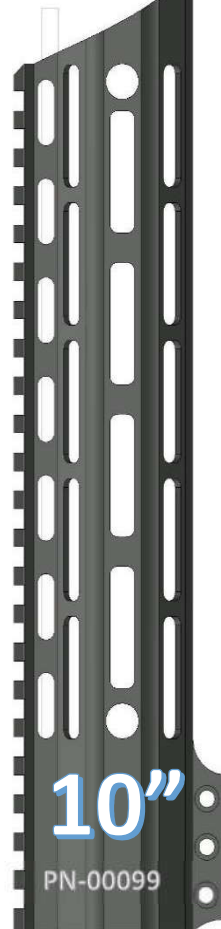
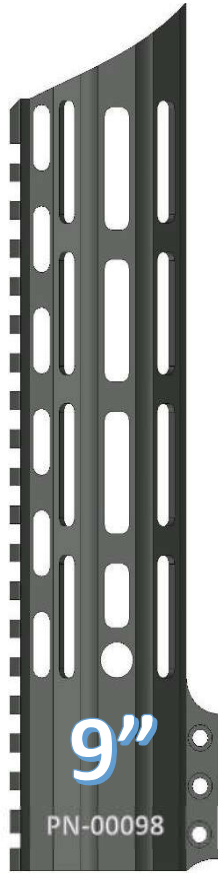
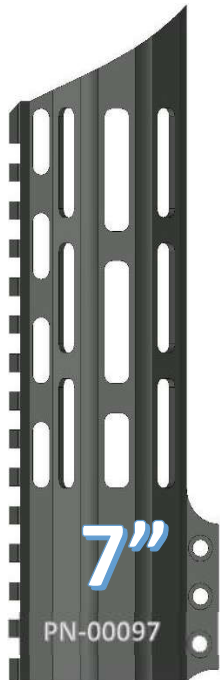


# ~THE BISHOP HANDGUARD~ MLOK OVAL PATTERN

## FEATURES

- MAG-PUL SPEC MLOK SLOTS
- QD ATTACHMENT POINTS
- STEEL BARREL NUT
- 6061 T6 ALLOY
- 100% MADE IN USA

[www.checkmate-tactical.com](http://www.checkmate-tactical.com) 720-989-7350





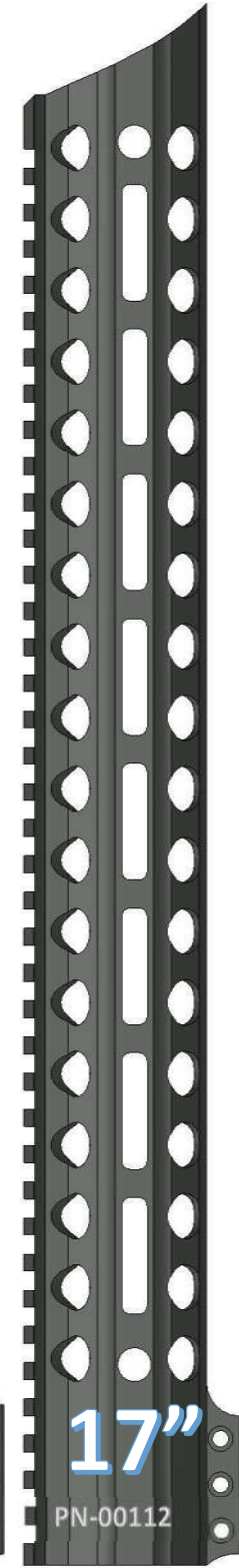
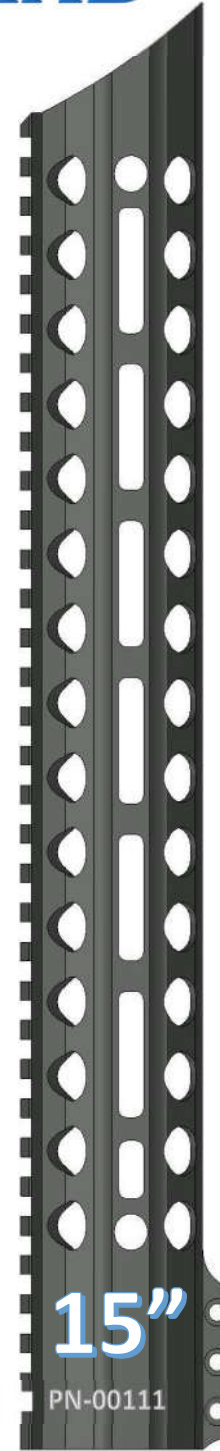
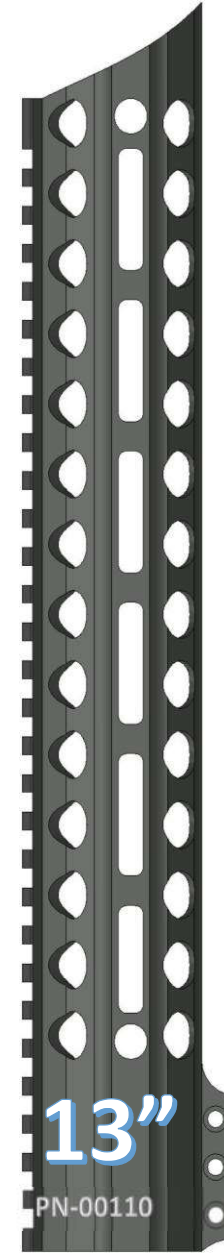
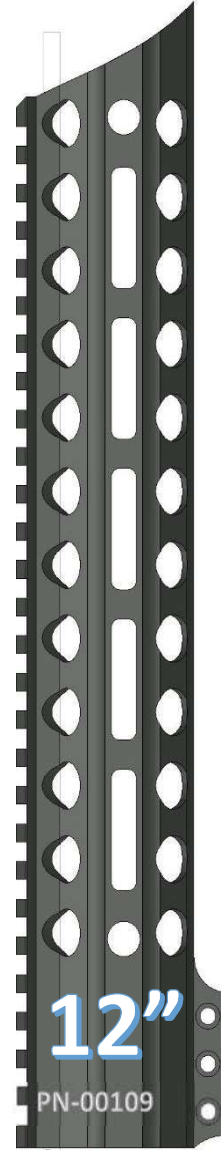
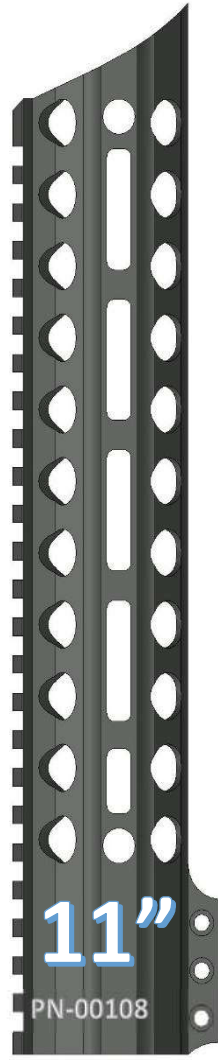
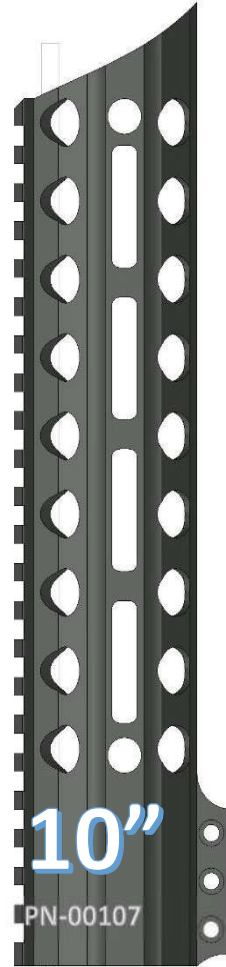
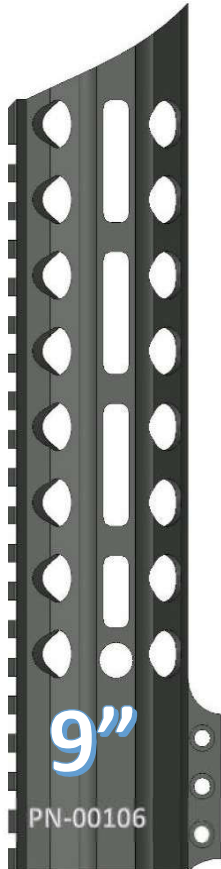
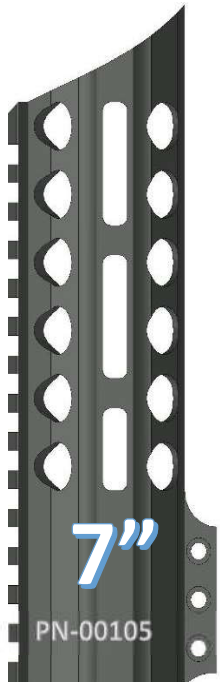


# ~THE BISHOP HANDGUARD~ MLOK RING PATTERN

## FEATURES

- MAG-PUL SPEC MLOK SLOTS
- QD ATTACHMENT POINTS
- STEEL BARREL NUT
- 6061 T6 ALLOY
- 100% MADE IN USA

[www.checkmate-tactical.com](http://www.checkmate-tactical.com) 720-989-7350





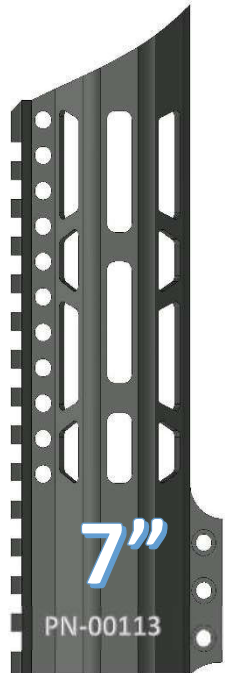
# ~THE BISHOP HANDGUARD~

## MLOK TRAPEZOID PATTERN

### FEATURES

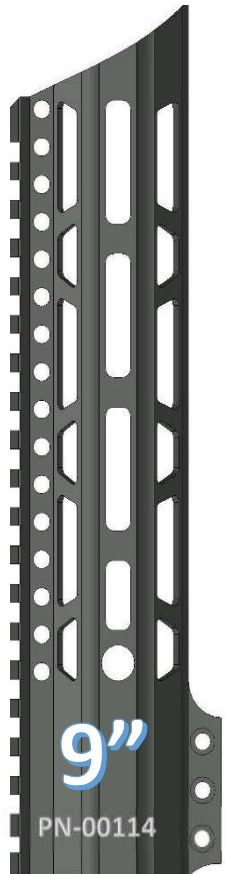
- MAG-PUL SPEC MLOK SLOTS
- QD ATTACHMENT POINTS
- STEEL BARREL NUT
- 6061 T6 ALLOY
- 100% MADE IN USA

[www.checkmate-tactical.com](http://www.checkmate-tactical.com) 720-989-7350



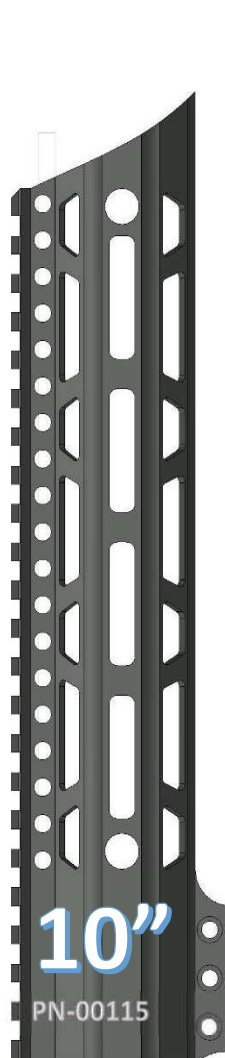
7"

PN-00113



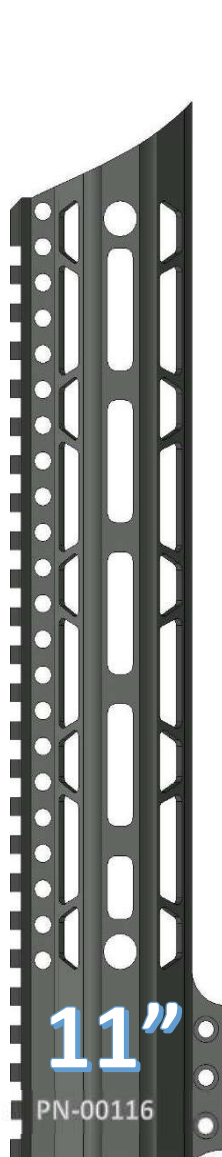
9"

PN-00114



10"

PN-00115



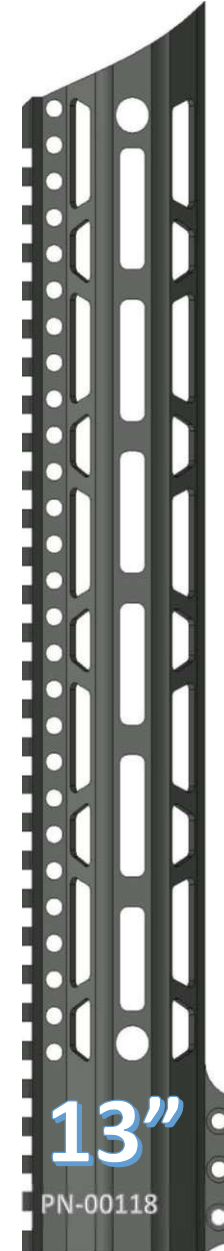
11"

PN-00116



12"

PN-00117



13"

PN-00118



15"

PN-00119



17"

PN-00120

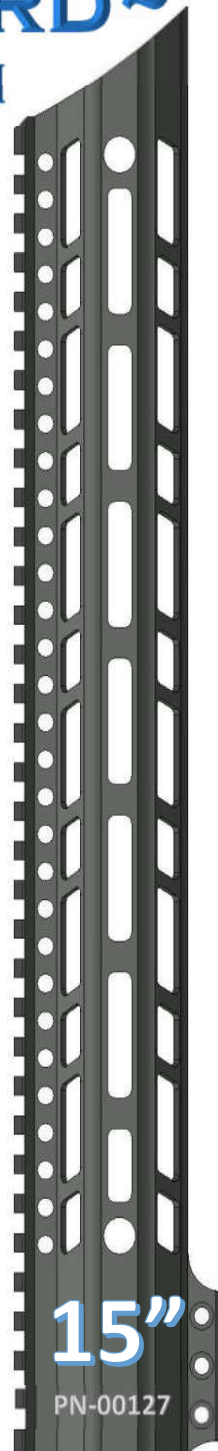
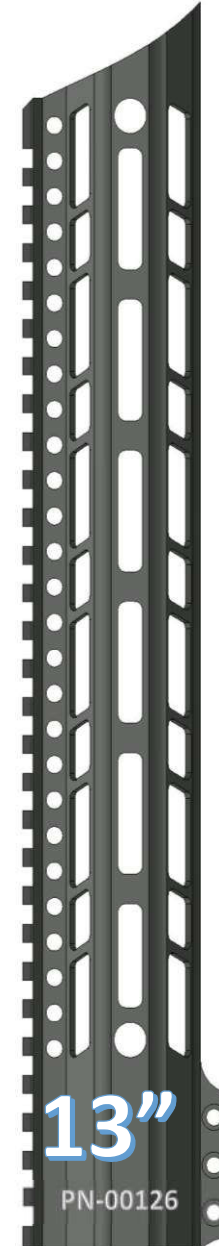
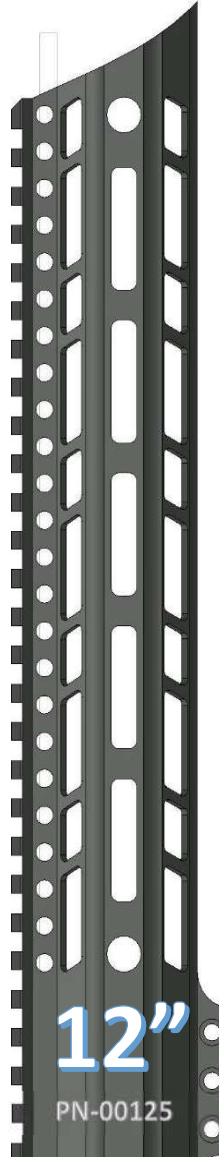
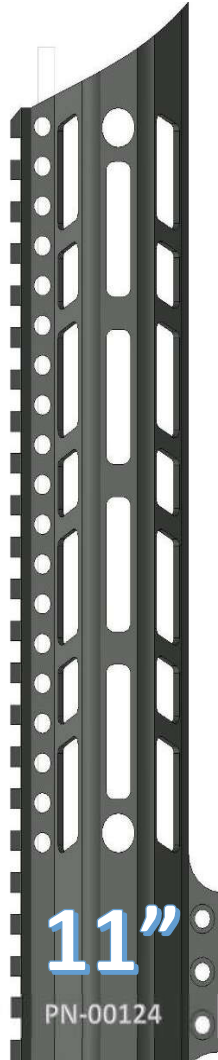
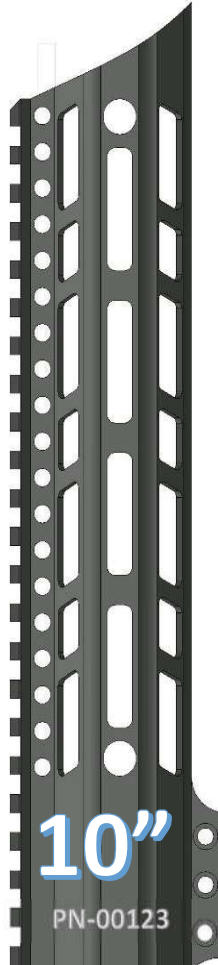
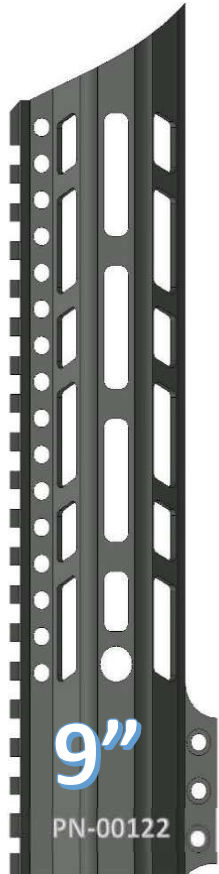
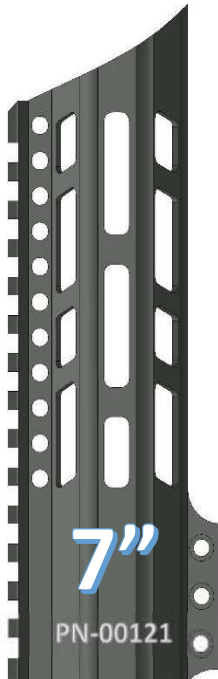


# ~THE BISHOP HANDGUARD~ MLOK PARALLELOGRAM PATTERN

## FEATURES

- MAG-PUL SPEC MLOK SLOTS
- QD ATTACHMENT POINTS
- STEEL BARREL NUT
- 6061 T6 ALLOY
- 100% MADE IN USA

[www.checkmate-tactical.com](http://www.checkmate-tactical.com) 720-989-7350



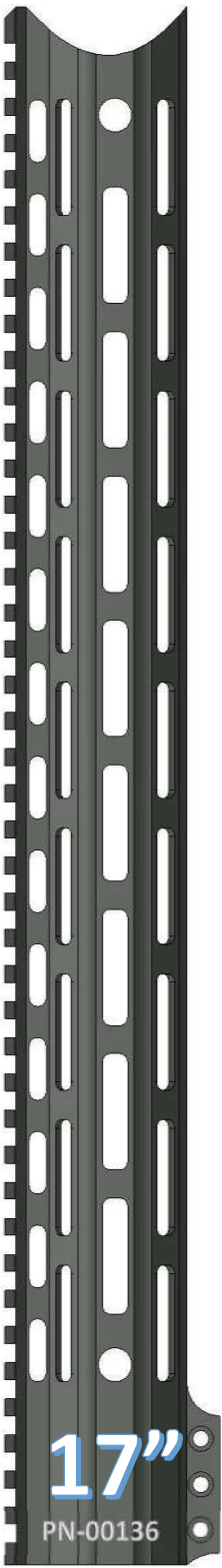
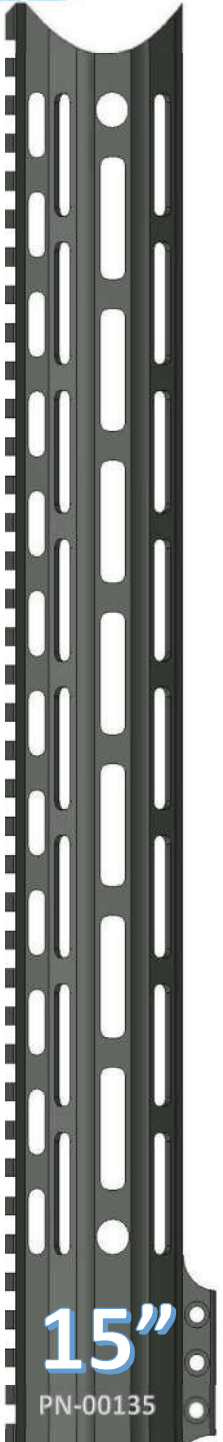
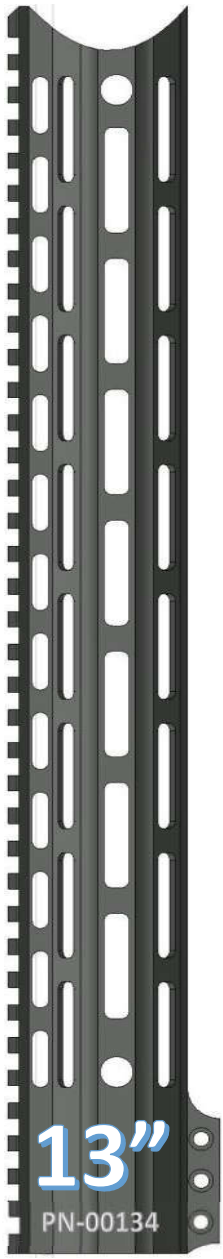
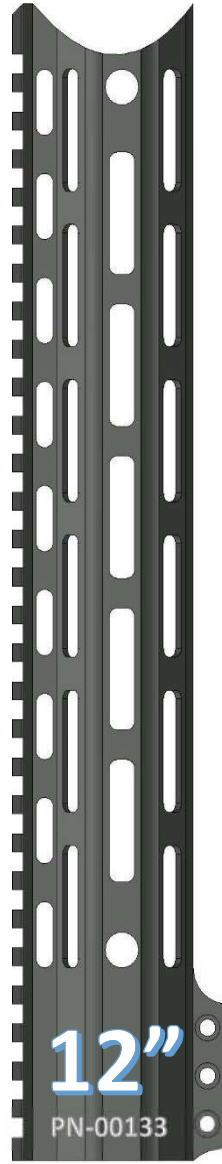
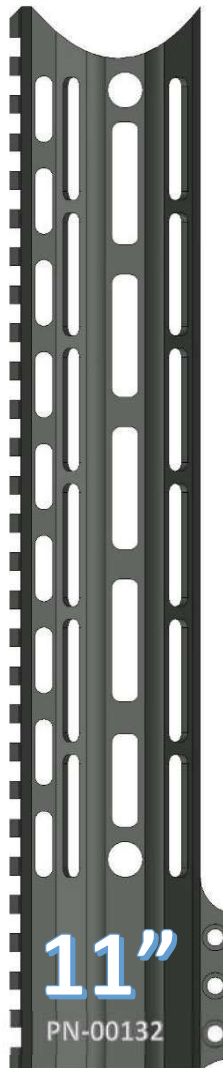
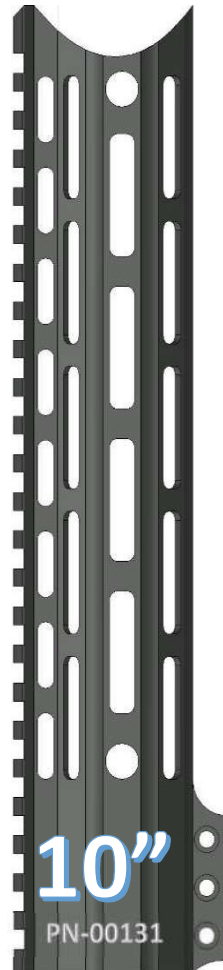
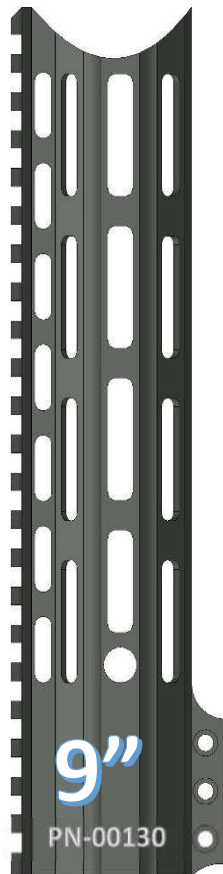
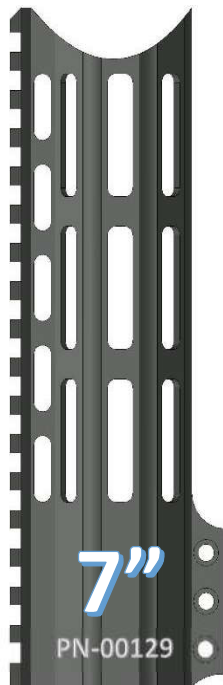


# ~THE QUEEN HANDGUARD~ MLOK OVAL PATTERN

## FEATURES

MAG-PUL SPEC MLOK SLOTS  
QD ATTACHMENT POINTS  
STEEL BARREL NUT  
6061 T6 ALLOY  
100% MADE IN USA

[www.checkmate-tactical.com](http://www.checkmate-tactical.com) 720-989-7350



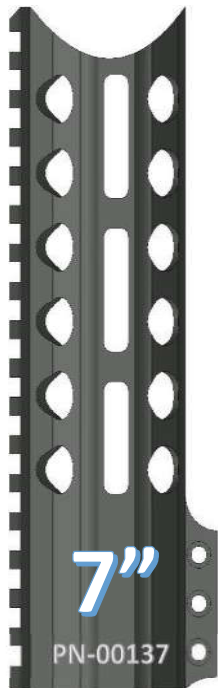


# ~THE QUEEN HANDGUARD~ MLOK RING PATTERN

## FEATURES

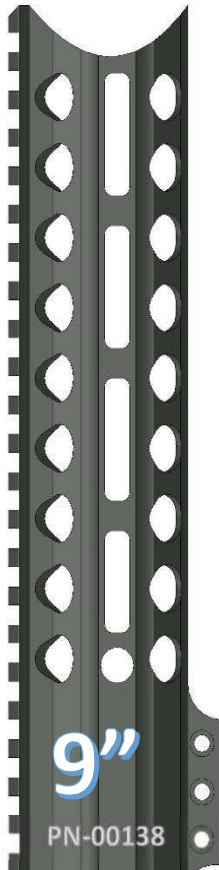
- MAG-PUL SPEC MLOK SLOTS
- QD ATTACHMENT POINTS
- STEEL BARREL NUT
- 6061 T6 ALLOY
- 100% MADE IN USA

[www.checkmate-tactical.com](http://www.checkmate-tactical.com) 720-989-7350



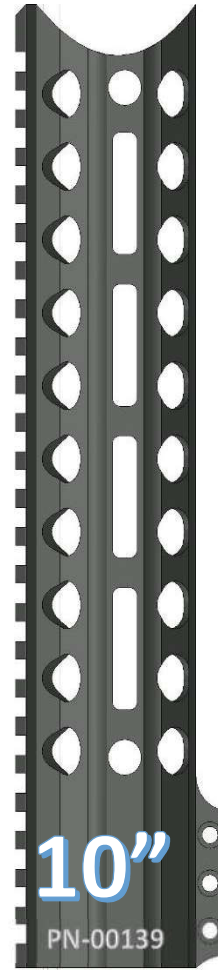
7"

PN-00137



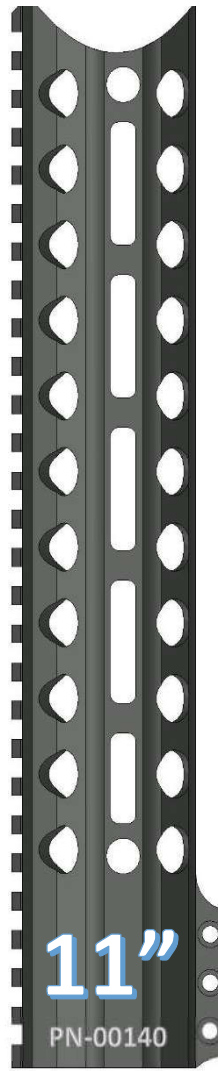
9"

PN-00138



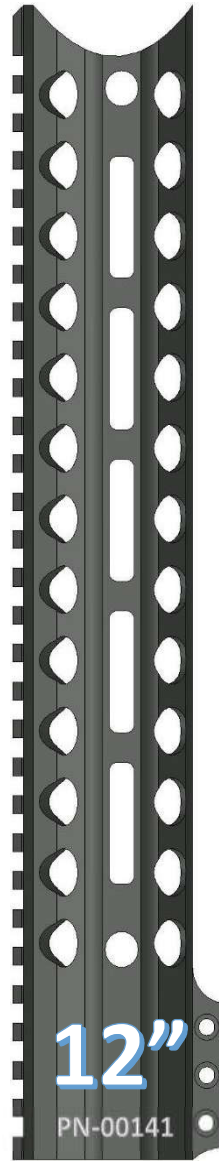
10"

PN-00139



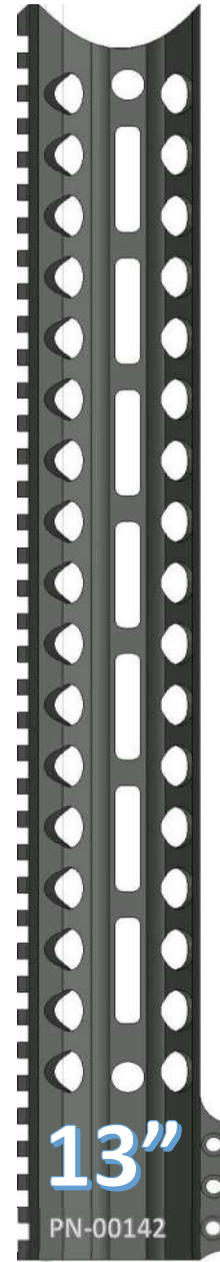
11"

PN-00140



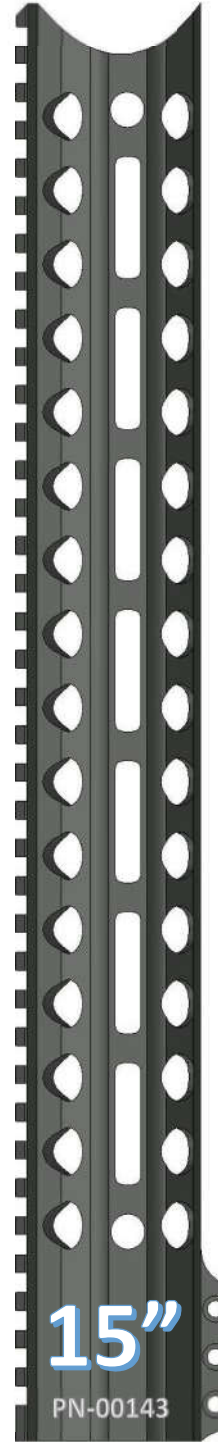
12"

PN-00141



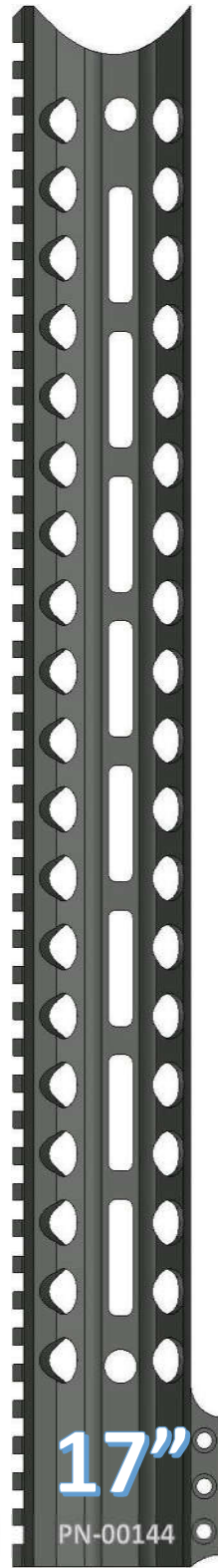
13"

PN-00142



15"

PN-00143



17"

PN-00144

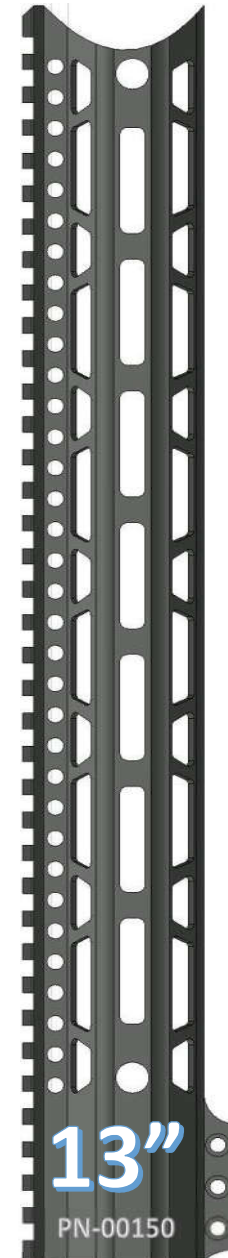
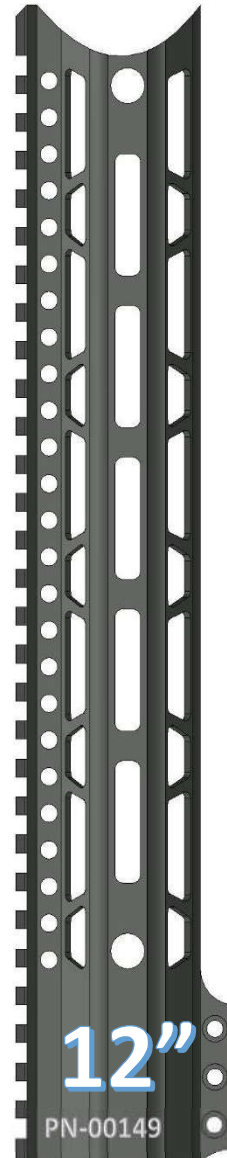
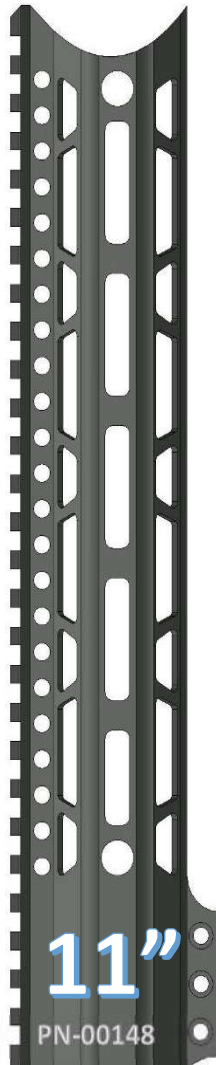
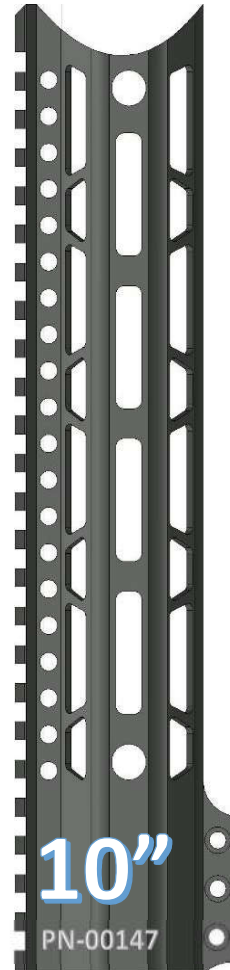
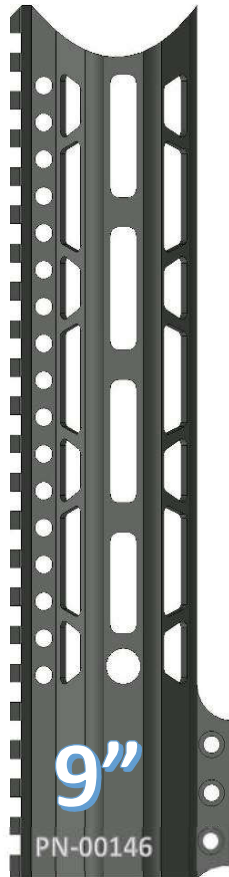
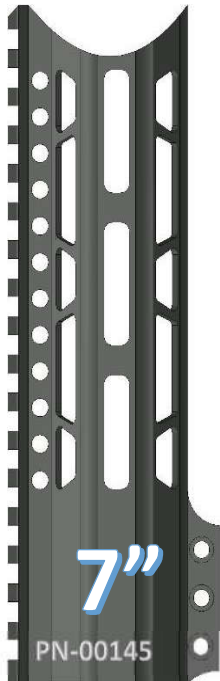


# ~THE QUEEN HANDGUARD~ MLOK TRAPEZOID PATTERN

## FEATURES

- MAG-PUL SPEC MLOK SLOTS
- QD ATTACHMENT POINTS
- STEEL BARREL NUT
- 6061 T6 ALLOY
- 100% MADE IN USA

[www.checkmate-tactical.com](http://www.checkmate-tactical.com) 720-989-7350





# ~THE QUEEN HANDGUARD~ MLOK PARALLELOGRAM PATTERN

## FEATURES

- MAG-PUL SPEC MLOK SLOTS
- QD ATTACHMENT POINTS
- STEEL BARREL NUT
- 6061 T6 ALLOY
- 100% MADE IN USA

[www.checkmate-tactical.com](http://www.checkmate-tactical.com) 720-989-7350

